

Elizabethtown College Wellness Center

Jake Evans, Tommy James, Buck Kauffman

EGR 343: Green Architectural Engineering
Elizabethtown College, Elizabethtown, PA



Project Constraints

- Fit on 775' X 230' site
- Include fitness area (Physical wellness), Counseling services (Mental wellness), Religious space (Spiritual wellness)
- Green Building techniques, Apply for LEED certification
- Reasonable for construction and budget
- Create Dining venue to create another campus "hub"

LEED Self-assessment highlights

- Green rooftop garden for water and heat control
- Sensitive land protection
- Rainwater collection
- Usage of recycled and low emitting materials
- Large windows, "clerestory" type, for natural daylight
- Rooftop solar panels



Weight room



Counseling waiting area

Design Features

Structure

- Approximately 100,000 sq. ft. building
- Brick exterior

Fitness Facilities

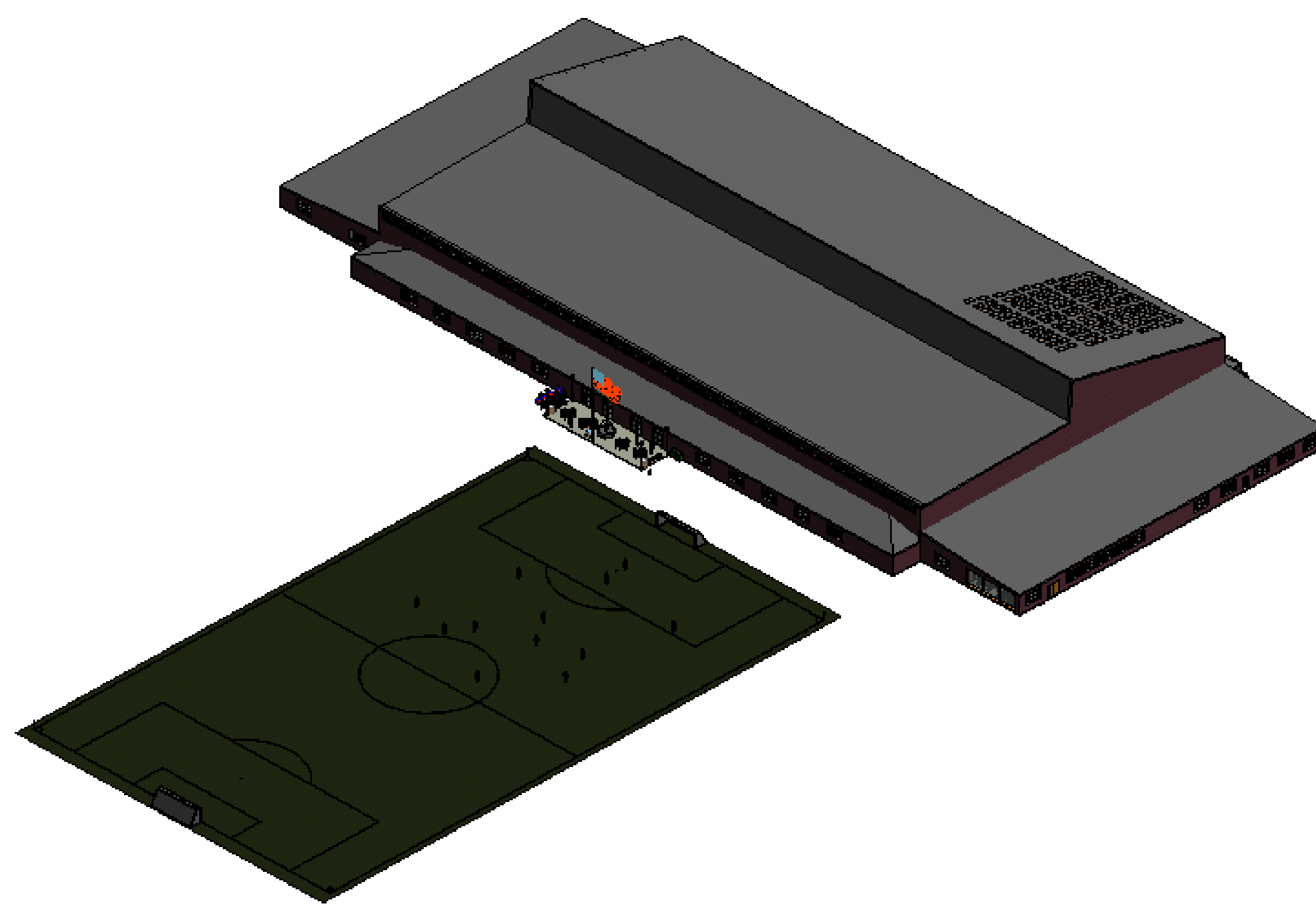
- 200m indoor Track, NCAA regulation to hold meets
- 3 multipurpose surface regulation basketball courts
- 6 Locker rooms for varsity sports/ student body and faculty use
- Weight room with free weights and machines, attached cardio room with treadmills, bikes, etc.
- Large room for group fitness classes (Yoga, Pound, Zumba, etc.)

Wellness Facilities

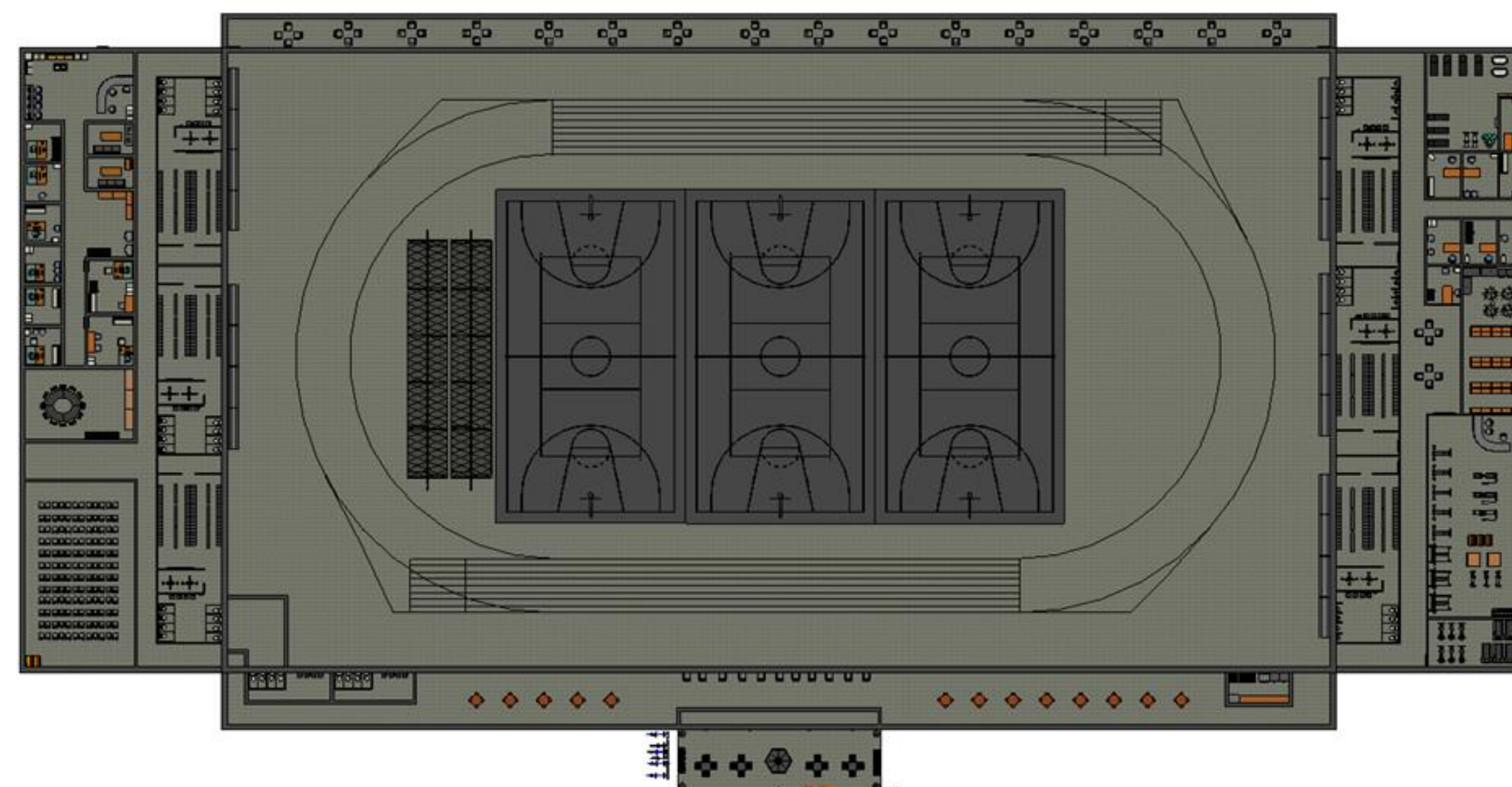
- Counseling services for the greater student body
- Training room for athletes and students in need of treatment
- Classrooms for wellness courses and Athletic film

Religious Space/Additional Facilities

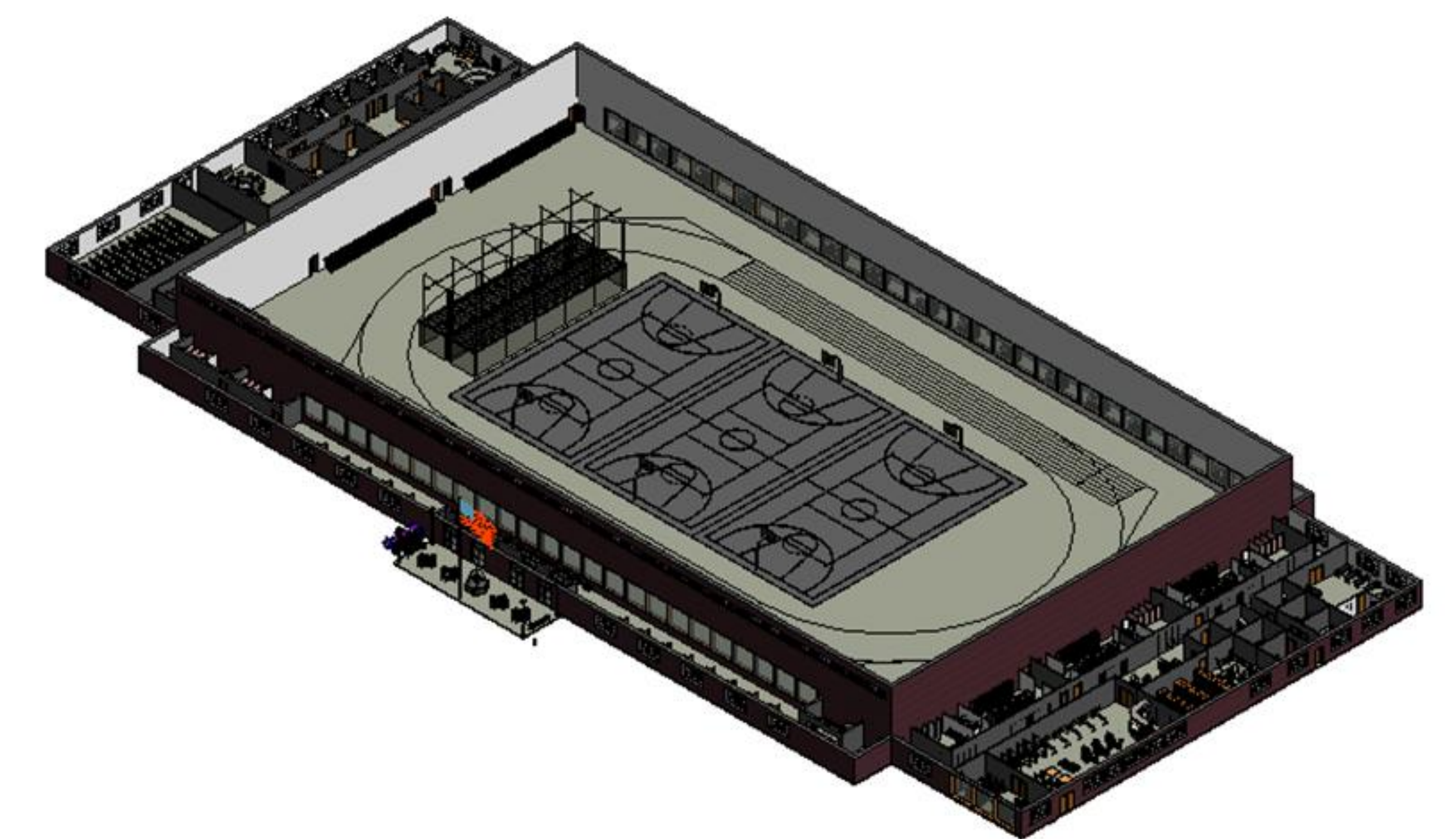
- Quiet sacred space for religious activities and reflection
- OSA offices for intramural sports and other activities
- Offices for coaches and other athletic officials



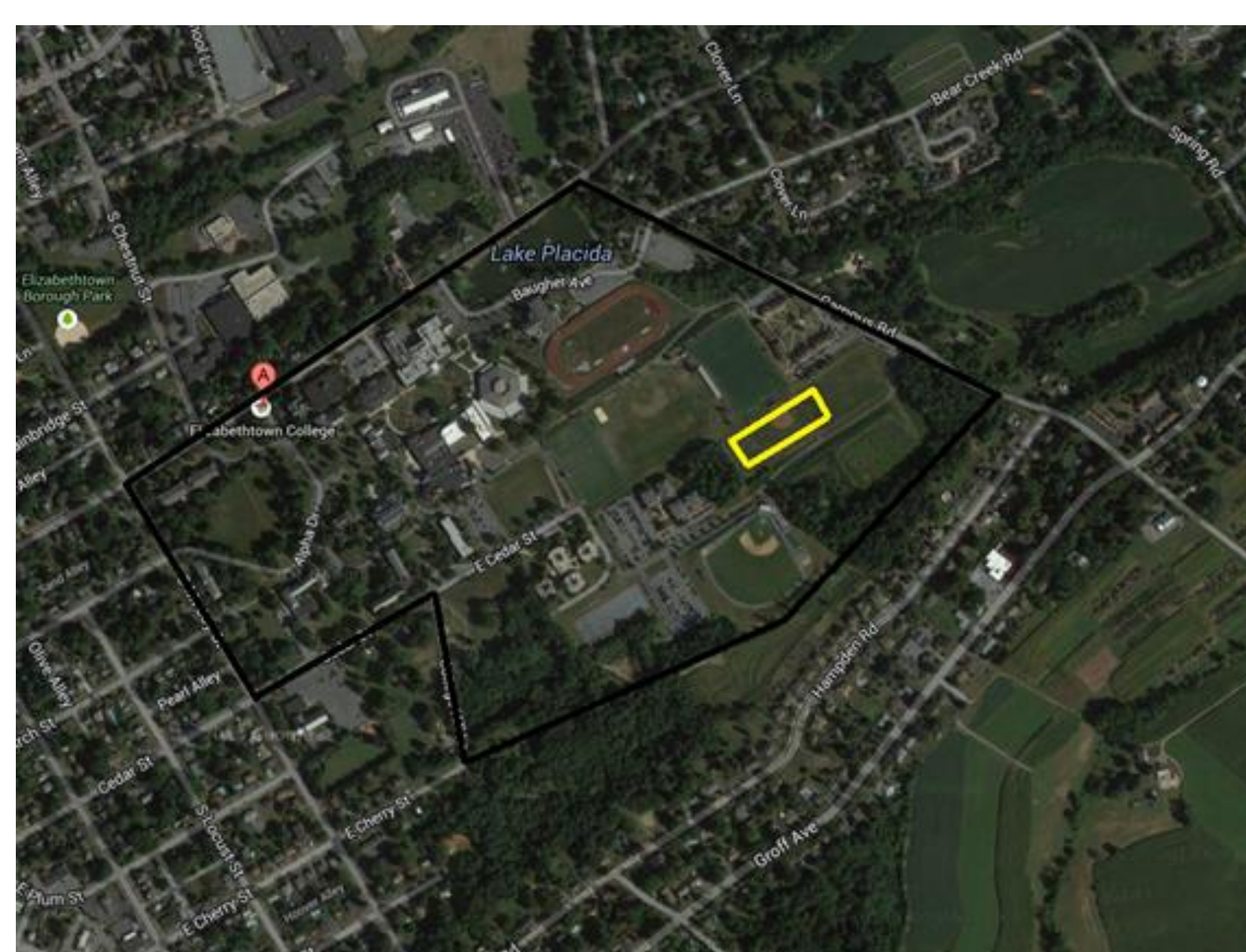
North side final view



Basic floor plan



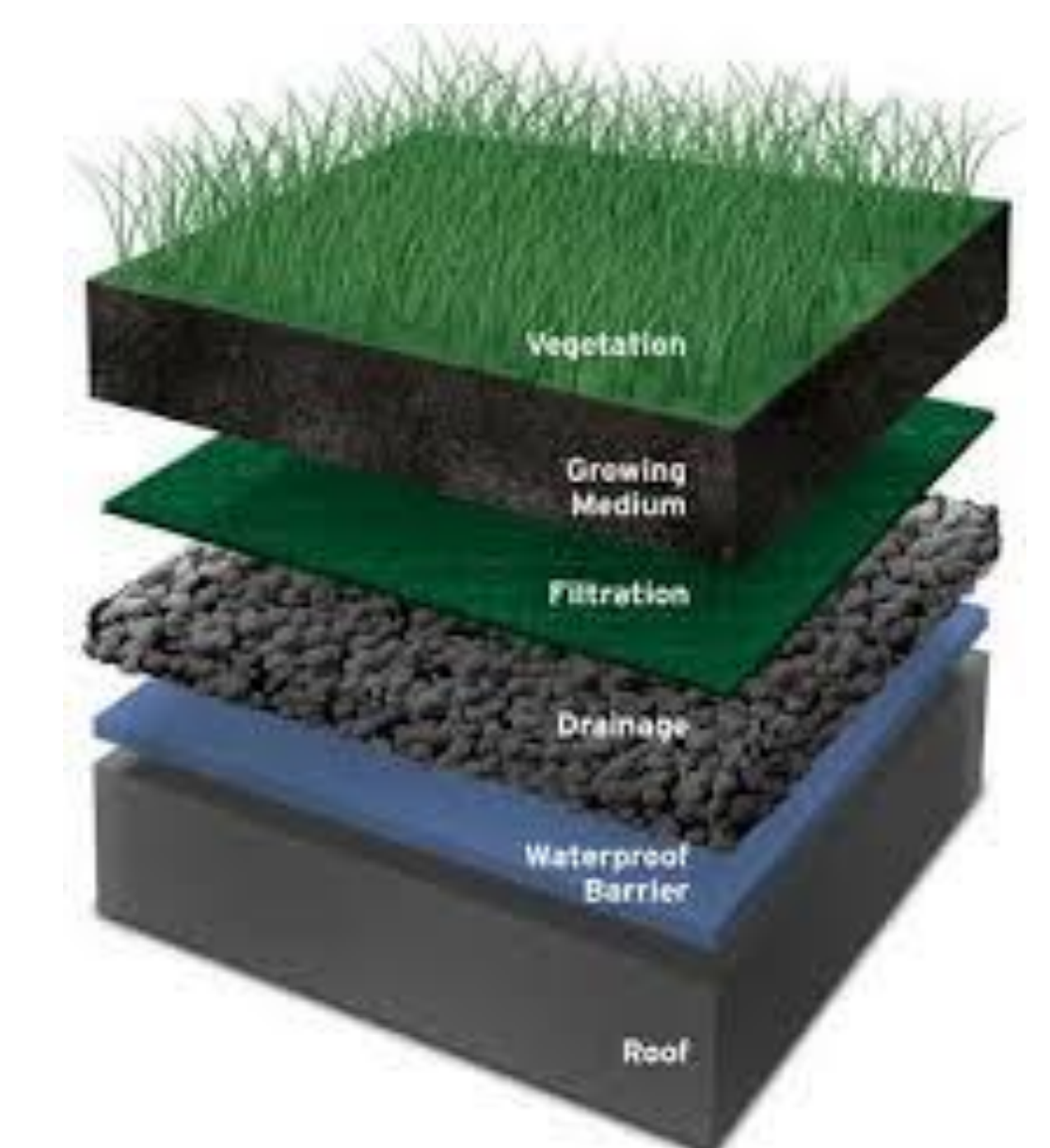
Exposed aerial view



Site selection relative to campus



Front view from existing soccer game field



Green rooftop structure